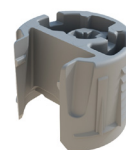
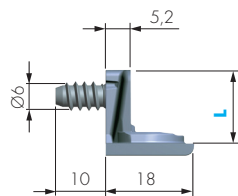
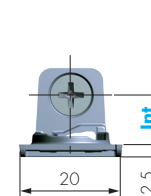
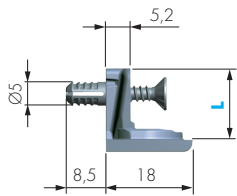
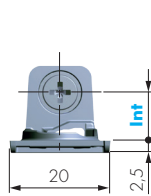
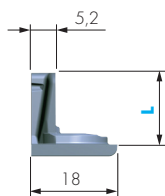
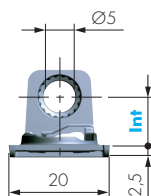
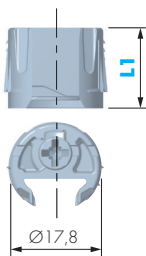
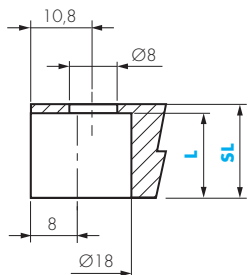




CARATTERISTICHE:

- Reggiano per mobili contenitori e interpareti.
- Montaggio automatizzabile.
- Consente l'utilizzo del ripiano in qualsiasi posizione, compresi il fondo e il cappello del mobile.
- Non necessita di giunzioni supplementari.
- Estetica minimale.



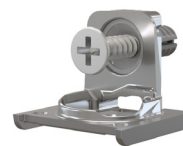
SUPPORTO PK2 PRO CON INSERTO

| SL | CODICE | L | L1 | MATERIALE | QUANTITÀ |
|-----------|----------|----|----|--------------|----------|
| 19 | 11411020 | 15 | 15 | ZAMA - PLAST | 2.000 |
| 25 | 11411030 | 18 | 18 | ZAMA - PLAST | 2.000 |



PK2 PRO CON FORO

| SL | CODICE | INT | L | MATERIALE | QUANTITÀ |
|-----------|----------|------|------|-----------|----------|
| 19 | 11413030 | 9,5 | 14,8 | ZAMA | 2.500 |
| 25 | 11414030 | 12,5 | 18,3 | ZAMA | 2.000 |



PK2 PRO CON BUSSOLA E VITE PREMONTATA

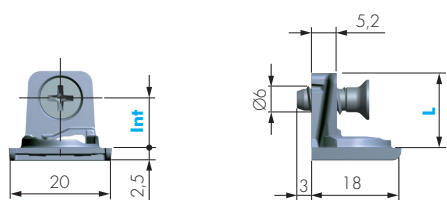
| SL | CODICE | INT | L | MATERIALE | QUANTITÀ |
|-----------|----------|------|------|-------------------|----------|
| 19 | 11413040 | 9,5 | 17,5 | ZAMA - PLAST - FE | 2.500 |
| 25 | 11414040 | 12,5 | 21 | ZAMA - PLAST - FE | 2.000 |



PK2 PRO CON VITE EURO TOTALMENTE PREMONTATA

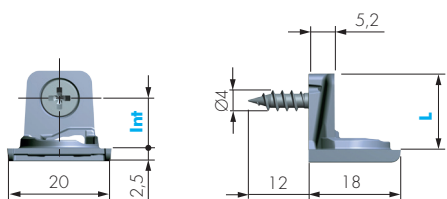
| SL | CODICE | INT | L | MATERIALE | QUANTITÀ |
|-----------|----------|------|------|-----------|----------|
| 19 | 11413060 | 9,5 | 17,5 | ZAMA - FE | 2.500 |
| 25 | 11414060 | 12,5 | 21 | ZAMA - FE | 2.000 |

PK2 PRO



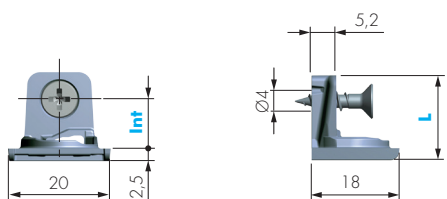
PK2 PRO CON VITE EURO PARZIALMENTE PREMONTATA

| SL | CODICE | INT | L | MATERIALE | QUANTITÀ |
|-----------|----------|------|------|-----------|----------|
| 19 | 11413061 | 9,5 | 17,5 | ZAMA - FE | 2.500 |
| 25 | 11414061 | 12,5 | 21 | ZAMA - FE | 2.000 |



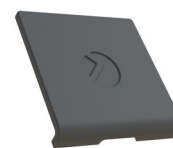
PK2 PRO CON VITE TOTALMENTE PREMONTATA

| SL | CODICE | INT | L | MATERIALE | QUANTITÀ |
|-----------|----------|------|------|-----------|----------|
| 19 | 11413070 | 9,5 | 17,5 | ZAMA - FE | 2.500 |
| 25 | 11414070 | 12,5 | 21 | ZAMA - FE | 2.000 |



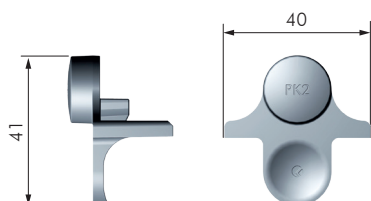
PK2 PRO CON VITE PARZIALMENTE PREMONTATA

| SL | CODICE | INT | L | MATERIALE | QUANTITÀ |
|-----------|----------|------|------|-----------|----------|
| 19 | 11413071 | 9,5 | 17,5 | ZAMA - FE | 2.500 |
| 25 | 11414071 | 12,5 | 21 | ZAMA - FE | 2.000 |



COVER PK2 PRO

| CODICE | MATERIALE | QUANTITÀ |
|----------|-----------|----------|
| 11448010 | PLAST | 10.000 |



DIMA PER SUPPORTO PK2 SL 16÷19 - 25 - 29

| CODICE | MATERIALE | QUANTITÀ |
|----------|-----------|----------|
| 11450010 | PLAST | 1 |