



SCHEDA TECNICA
GIUNZIONE K TOP

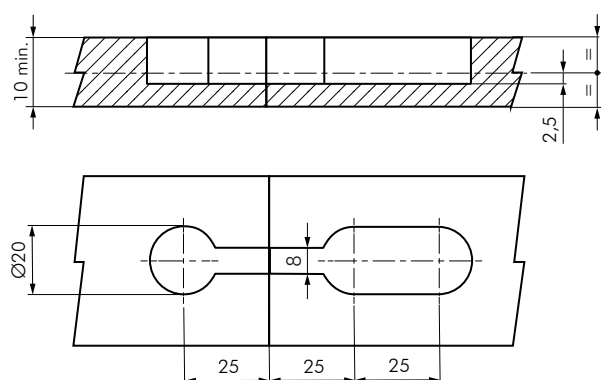
K TOP

- Giunzione ideale per unire due top o due pannelli.
- A partire da spessore legno di 10 mm.
- Unisce il mobile in modo solido e stabile.
- Materiale: zama, acciaio.

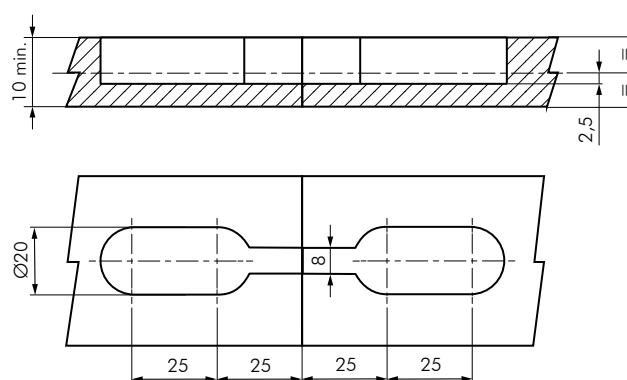


FORATURE

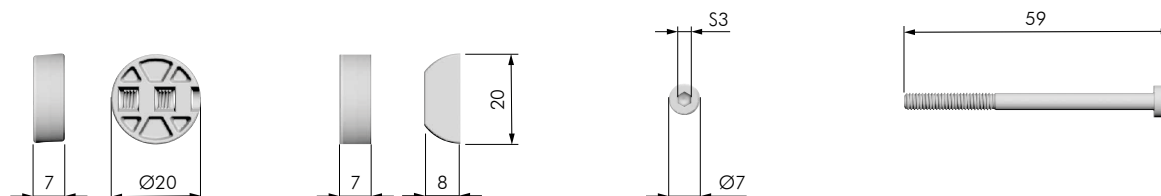
Foratura asimmetrica



Foratura simmetrica

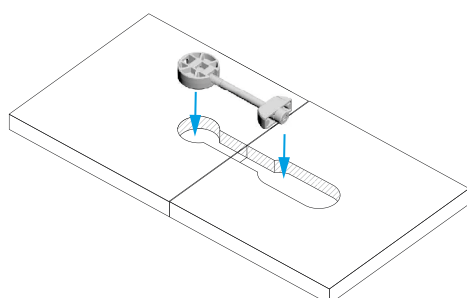


DIMENSIONI

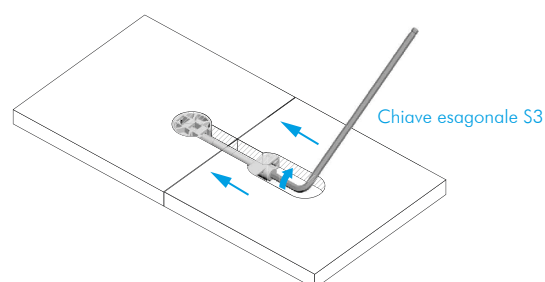


INSTALLAZIONE

STEP 1 - Inserimento K Top



STEP 2 - Serraggio



FERRAMENTA LIVENZA SRL

SEDE: viale L. Zanussi, 21 | 33070 Maron di Brugnera (PN)

T: +39 0434 616211 | F: +39 0434 616218

E: info@ferramentaliveza.it

FILIALE: via Milano, 124 | 61122 Pesaro (PU)

T: +39 0721 283531 | F: +39 0721 280175

www.ferramentaliveza.it