



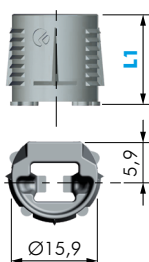
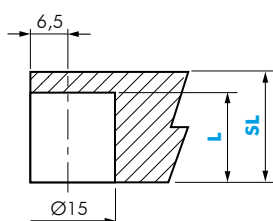
SCHEDA TECNICA
REGGIPIANO KALIPSO

KALIPSO

- Kalipso è il reggipiano per la zona giorno, la zona notte e per la cucina.
- Caratterizzato dall'assenza di viti a vista.
- Previsto in diverse versioni: con foro vite, con vite euro preassemblata, con perno ($\varnothing 5$, $\varnothing 4$, $\varnothing 3$), con bussola e vite preassemblata.
- Montaggio e smontaggio manuali.
- Colori standard o personalizzabili su richiesta (previa verifica tecnica).
- Garantisce totale sicurezza grazie alla proprietà di antisganciamento.
- Peso supportato 25 Kg secondo norma UNI:EN 16337.
- Materiale: zama e plastica.

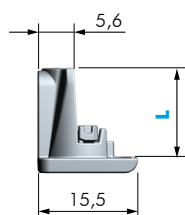
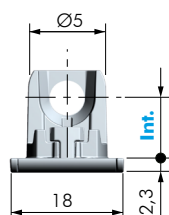


FORATURE

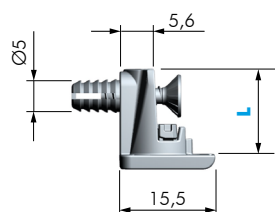
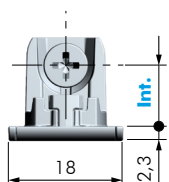


SL	DESCRIZIONE	L	L1
18/19	SUPPORTO KALIPSO	15,5	15
25		18,5	18
29/30		21	20,5

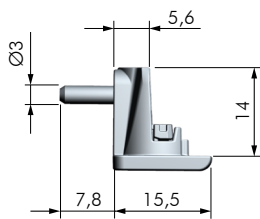
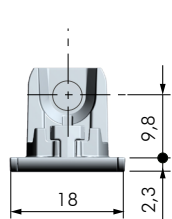
DIMENSIONI



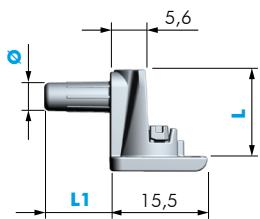
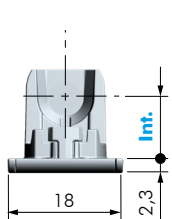
SL	DESCRIZIONE	INT	L
18/19	KALIPSO CON FORO	9,5	14
25		12,5	17
29/30		15	19



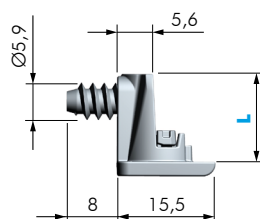
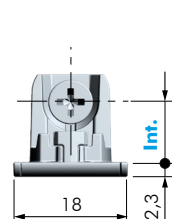
SL	DESCRIZIONE	INT	L
18/19	KALIPSO CON BUSSOLA E VITE PREMONTATA	9,5	14
25		12,5	17
29/30		15	19



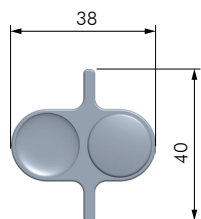
SL	DESCRIZIONE
18/19	KALIPSO CON PERNO



SL	DESCRIZIONE	INT	L	L1	Ø
18/19	KALIPSO CON PERNO	9,5	14	9	4
25		12,5	17	10,5	5
29/30		14,5	18,5		



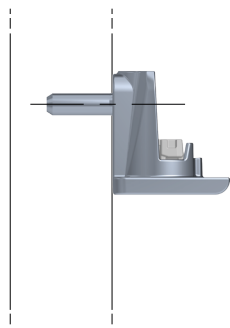
SL	DESCRIZIONE	INT	L
18/19	KALIPSO CON VITE EURO	9,5	14
25		12,5	17
29/30		15	19



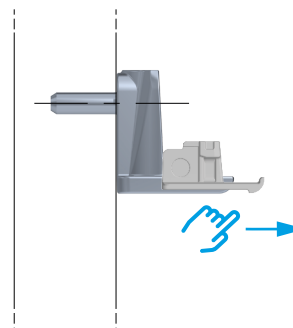
DESCRIZIONE
DIMA PER SUPPORTO KALIPSO SL 18÷19 - 25 - 29÷30

INSTALLAZIONE

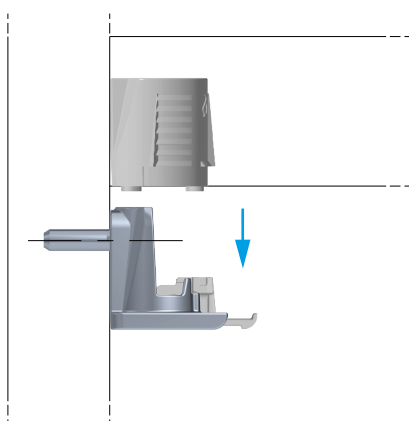
STEP 1 - Inserimento reggipiano



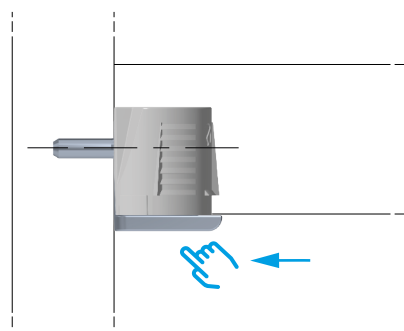
STEP 2 - Apertura cover



STEP 3 - Inserimento ripiano



STEP 4 - Chiusura cover



FERRAMENTA LIVENZA SRL

SEDE: viale L. Zanussi, 21 | 33070 Maron di Brugnera (PN)

T: +39 0434 616211 | F: +39 0434 616218

E: info@ferramentaliveza.it

FILIALE: via Milano, 124 | 61122 Pesaro (PU)

T: +39 0721 283531 | F: +39 0721 280175

www.ferramentaliveza.it