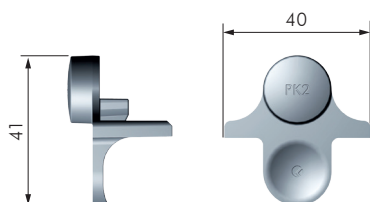
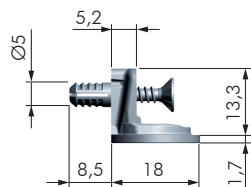
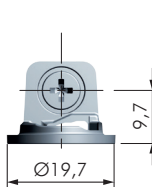
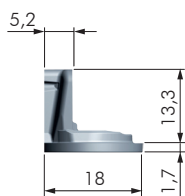
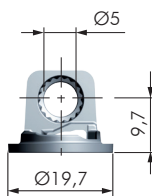
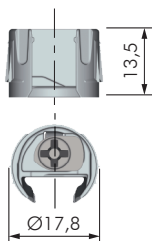
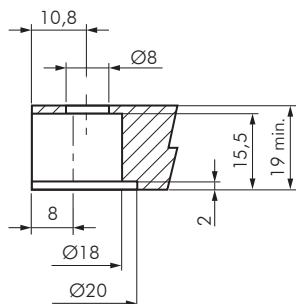


PK2 BASE TONDA



CARATTERISTICHE:

- Reggiano per mobili contenitori e interpareti.
- Montaggio automatizzabile.
- Montaggio completamente a filo del ripiano.
- Consente l'utilizzo del ripiano in qualsiasi posizione, compresi il fondo e il cappello del mobile.
- Non necessita di giunzioni supplementari.



SUPPORTO PK2 CON INSERTO

| SL | CODICE | MATERIALE | QUANTITÀ |
|----|----------|--------------|----------|
| 16 | 11401010 | ZAMA - PLAST | 2.000 |



PK2 BASE TONDA CON FORO

| SL | CODICE | MATERIALE | QUANTITÀ |
|----|----------|-----------|----------|
| 16 | 11402110 | ZAMA | 2.500 |



PK2 BASE TONDA CON BUSSOLA E VITE PREMONTATA

| SL | CODICE | MATERIALE | QUANTITÀ |
|----|----------|-------------------|----------|
| 16 | 11402120 | ZAMA - PLAST - FE | 2.500 |



DIMA PER SUPPORTO PK2 SL 16÷19 - 25 - 29

| CODICE | MATERIALE | QUANTITÀ |
|----------|-----------|----------|
| 11450010 | PLAST | 1 |